

Barrington Council for the Gifted and Talented (BCGT) Presents

September Wisdom Study Smarter, Better and Learn it All

Thursday, September 23, 7:00 – 8:00 p.m. CDT



Dr. Robert Hunt
Barrington 220
Superintendent
of Schools



Jimmy Kim
Educational
Consultant



**Dr. Cheryl
Peterson**
Gifted Education
Specialist



Jeff Nickles
Managing Director,
Customer Success,
FSI at Microsoft

Build Metacognition, Habits of Mind and Growth Mindset

JOIN THE BCGT COMMUNITY FOR ITS SEPTEMBER WISDOM WEBINAR TITLED “**STUDY SMARTER, BETTER AND LEARN IT ALL**”.

JIMMY KIM, DR. CHERYL PETERSON AND JEFF NICKLES ARE PASSIONATE LEADERS IN CONTINUOUS AND PERSISTENT LEARNING. WE WILL FOCUS ON THE ESSENTIAL LEARNING SKILLS, HABITS AND PERSPECTIVES ON:

HOW TO STUDY SMARTER, BETTER AND LEARN IT ALL?

THE VIRTUAL ZOOM EVENT WILL TAKE PLACE ON **THURSDAY, SEPTEMBER 23RD AT 7 PM CDT**. LINK WILL BE PROVIDED PRIOR TO THE SEPTEMBER WISDOM EVENT.

WE NEED YOUR HELP TO GET THE WORD OUT ABOUT THE BCGT SEPTEMBER WISDOM EVENT. REGISTER TODAY AND SHARE THE LINK WITH YOUR FRIENDS/FAMILY.

REGISTER TODAY!
BCGT220.ORG/EVENTS



Hyunil James Kim, M.Ed.



Jimmy is the Executive Director of Academics and Co-founder of Excellerate Learning Studio. His mission is to invest in people through education by helping them to nurture and live out their strengths and passions, so that they can bring positive and fulfilling growth from within, overflowing into their families and communities.

He is an educational consultant and instructional designer, having worked with organizations such as Google and Harvard Radcliffe Institute. He obtained a B.S. in Integrated Science Program at Northwestern University (IL) and a M.Ed. in Technology, Innovation, & Education from Harvard Graduate School of Education (MA).

Jimmy has been married for 18 years and has two boys, 4th and 6th graders. Over the last year and a half, his family became serial tent campers, and Jimmy continues to be short on time and money for board games.

Cheryl is an adjunct professor in the Gifted Education Graduate Certificate Program at Hamline University, MN.

She obtained a B.A. from Millikin University in Elementary Education, a M.A. from the University of Iowa in Educational Psychology and a Ph.D. from the University of Minnesota in Curriculum and Instruction.

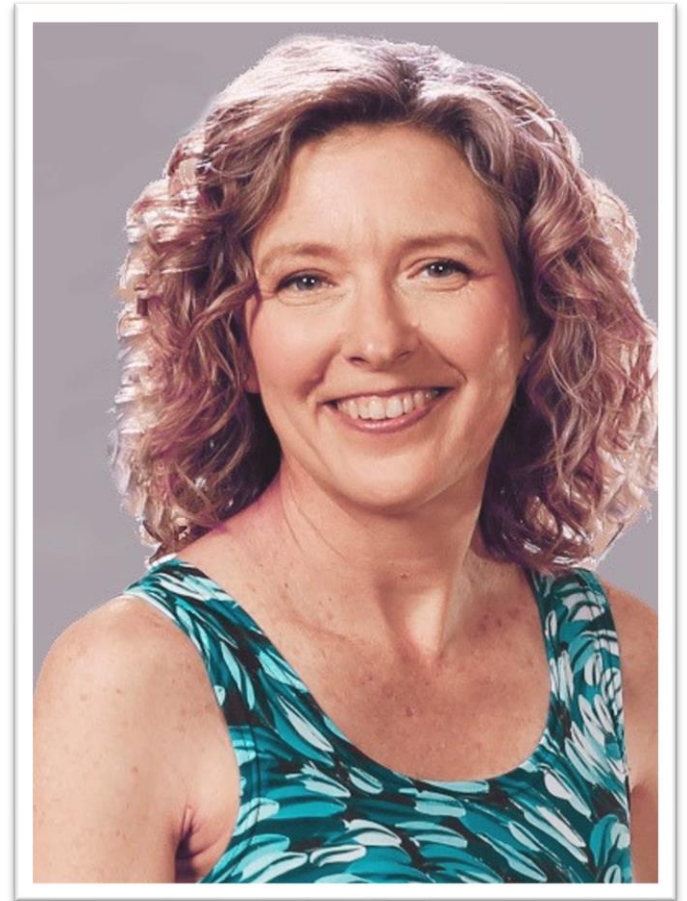
As an educational consultant and blogger @drcherylpeterson.com, she uses her 30 years of teaching experience at all levels to support families and teachers with an educational philosophy of play, practice and purpose.

She is currently working on releasing her first book, Because of 4...Be More! An inspirational story and handbook for teachers to bring play, practice and purpose to their own life and to the students who need it most.



DR. CHERYL
P E T E R S O N

<http://explore-ideasconsulting.com/>

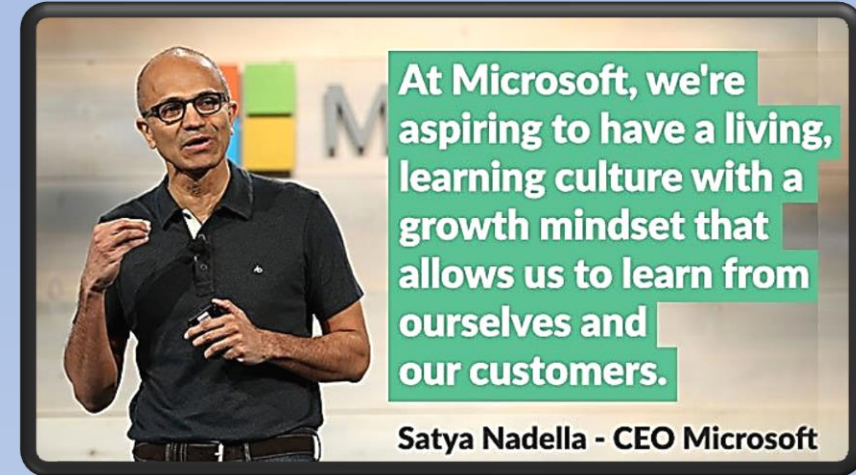


Jeff A. Nickles



Jeff is first and foremost a father of two amazing, twin 13-year-olds (Maggie and James). He has a passion for athletics, building teams and has coached numerous baseball, basketball and soccer teams over the last decade plus. He is currently the 8th grade boy's basketball coach at Frassati Academy in Wauconda.

Jeff is a Managing Director, Customer Success at Microsoft Corporation. His tenure at Microsoft has included roles across Enterprise Sales, Support and now Customer Success during his 22 years at Microsoft. He brings his coaching passion to the workplace and is a firm believer 'culture eats strategy for breakfast.' His focus is to provide a place of psychological safety for his national team & embed a Growth Mindset in his team's approach helping transform and grow our partnerships within the dynamic Financial Services Industry.



At Microsoft, we're aspiring to have a living, learning culture with a growth mindset that allows us to learn from ourselves and our customers.

Satya Nadella - CEO Microsoft

Join us for a discussion on changing our view from dividing the world between the weak and the strong, successes and failures to a shift to learners and non-learners.

