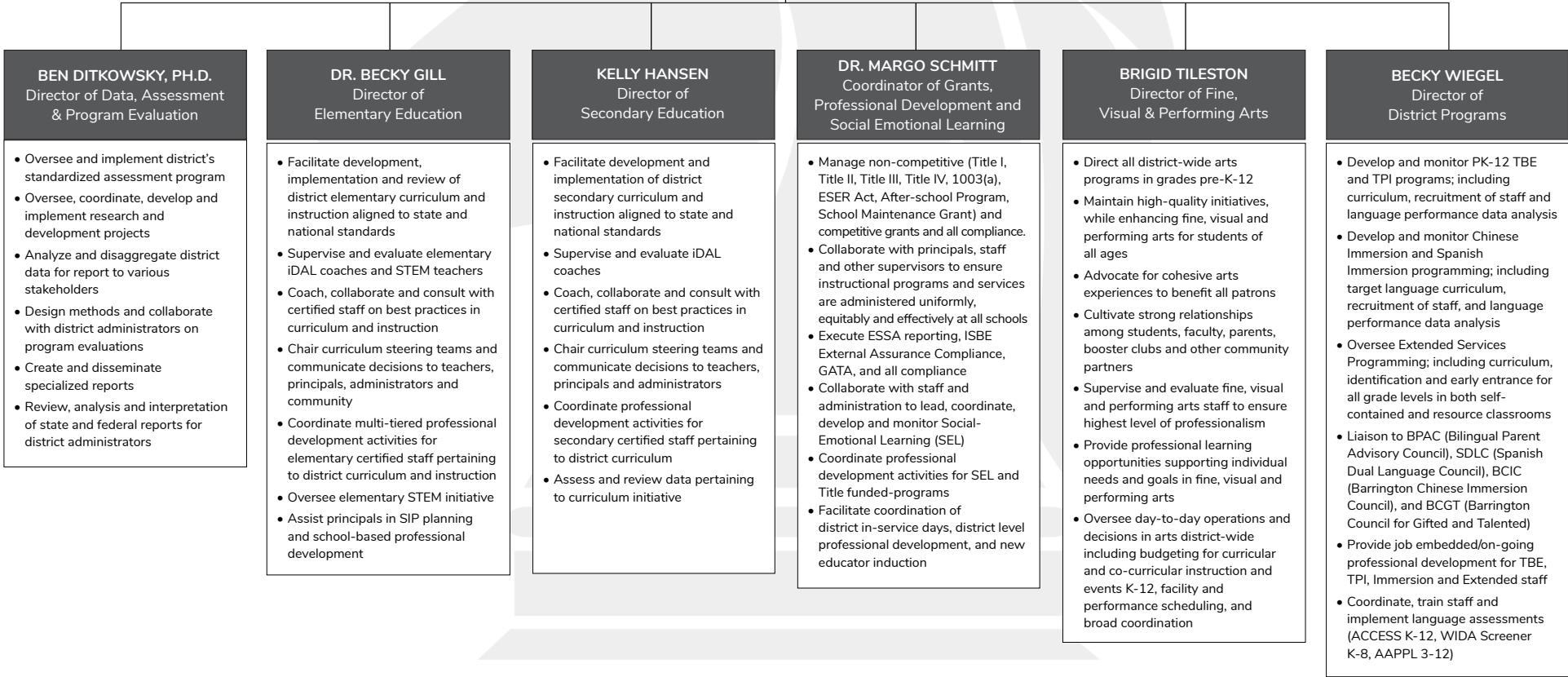


BARRINGTON 220 | DEPARTMENT OF TEACHING & LEARNING

JOHN BRUESCH
ASSISTANT SUPERINTENDENT OF TEACHING AND LEARNING

- Supervise/evaluate directors (language, secondary education, elementary education, assessment, extended programs, fine arts) curriculum, preK-12
- Supervise alignment and review of PreK-12 curriculum, instruction, and staff development
- Supervise and review new educator orientation and mentoring
- Oversee and support assessment and reporting related to state testing and accountability
- Oversee grant applications and reporting
- Oversee district programs (Dual Language, Chinese Immersion, Gifted & Talented)

ANNE BONCIMINO
Administrative Assistant



BEN DITKOWSKY, PH.D.
Director of Data, Assessment & Program Evaluation

- Oversee and implement district's standardized assessment program
- Oversee, coordinate, develop and implement research and development projects
- Analyze and disaggregate district data for report to various stakeholders
- Design methods and collaborate with district administrators on program evaluations
- Create and disseminate specialized reports
- Review, analysis and interpretation of state and federal reports for district administrators

DR. BECKY GILL
Director of Elementary Education

- Facilitate development, implementation and review of district elementary curriculum and instruction aligned to state and national standards
- Supervise and evaluate elementary iDAL coaches and STEM teachers
- Coach, collaborate and consult with certified staff on best practices in curriculum and instruction
- Chair curriculum steering teams and communicate decisions to teachers, principals, administrators and community
- Coordinate multi-tiered professional development activities for elementary certified staff pertaining to district curriculum and instruction
- Oversee elementary STEM initiative
- Assist principals in SIP planning and school-based professional development

KELLY HANSEN
Director of Secondary Education

- Facilitate development and implementation of district secondary curriculum and instruction aligned to state and national standards
- Supervise and evaluate iDAL coaches
- Coach, collaborate and consult with certified staff on best practices in curriculum and instruction
- Chair curriculum steering teams and communicate decisions to teachers, principals and administrators
- Coordinate professional development activities for secondary certified staff pertaining to district curriculum
- Assess and review data pertaining to curriculum initiative

DR. MARGO SCHMITT
Coordinator of Grants, Professional Development and Social Emotional Learning

- Manage non-competitive (Title I, Title II, Title III, Title IV, 1003(a), ESER Act, After-school Program, School Maintenance Grant) and competitive grants and all compliance.
- Collaborate with principals, staff and other supervisors to ensure instructional programs and services are administered uniformly, equitably and effectively at all schools
- Execute ESSA reporting, ISBE External Assurance Compliance, GATA, and all compliance
- Collaborate with staff and administration to lead, coordinate, develop and monitor Social-Emotional Learning (SEL)
- Coordinate professional development activities for SEL and Title funded-programs
- Facilitate coordination of district in-service days, district level professional development, and new educator induction

BRIGID TILESTON
Director of Fine, Visual & Performing Arts

- Direct all district-wide arts programs in grades pre-K-12
- Maintain high-quality initiatives, while enhancing fine, visual and performing arts for students of all ages
- Advocate for cohesive arts experiences to benefit all patrons
- Cultivate strong relationships among students, faculty, parents, booster clubs and other community partners
- Supervise and evaluate fine, visual and performing arts staff to ensure highest level of professionalism
- Provide professional learning opportunities supporting individual needs and goals in fine, visual and performing arts
- Oversee day-to-day operations and decisions in arts district-wide including budgeting for curricular and co-curricular instruction and events K-12, facility and performance scheduling, and broad coordination

BECKY WIEGEL
Director of District Programs

- Develop and monitor PK-12 TBE and TPI programs; including curriculum, recruitment of staff and language performance data analysis
- Develop and monitor Chinese Immersion programming; including target language curriculum, recruitment of staff, and language performance data analysis
- Oversee Extended Services Programming; including curriculum, identification and early entrance for all grade levels in both self-contained and resource classrooms
- Liaison to BPAC (Bilingual Parent Advisory Council), SDLC (Spanish Dual Language Council), BCIC (Barrington Chinese Immersion Council), and BCGT (Barrington Council for Gifted and Talented)
- Provide job embedded/on-going professional development for TBE, TPI, Immersion and Extended staff
- Coordinate, train staff and implement language assessments (ACCESS K-12, WIDA Screener K-8, AAPPL 3-12)